



APS



**Mays Cluster  
Community Meeting  
January 26, 2017**

**Follow Along:  
[www.atlantapublicschools.us/schoolchanges](http://www.atlantapublicschools.us/schoolchanges)**

**Select: "Mays Cluster Presentation"**

# Agenda

---

**Welcome & Introductions**

**Purpose of Meeting**

State of Cluster Summary

Proposal for Operating Model Changes in Mays Cluster

Q&A

# Agenda

---

Welcome & Introductions

Purpose of Meeting

**State of Cluster Summary**

Proposal for Operating Model Changes in Mays Cluster

Q&A



APS is

on a Journey of Transformation

# Mays Cluster Signature Program Implementation of International Baccalaureate (IB)

## Mays Cluster IB Program Phasing

Apply for Candidacy ★ Consultant Visit ◆ Apply for Authorization ● Verification Visit ◻ Program Evaluation Visit ▲

Program	FY17	FY18	FY19	FY20	FY21
Mays CP	Consideration ★	Candidate School	◆	● ◻	Authorized World School ▲
Mays DP	Consideration	★	Candidate School	◆	● ◻
Young-Mays MYP	Consideration ★	Candidate School	◆	● ◻	Authorized World School ▲
Miles PYP	Consideration ★	Candidate School	◆	● ◻	Authorized World School ▲
Adamsville PYP	Candidate School	◆	● ◻	Authorized World School ▲	
Beecher Hills PYP	▲	Authorized World School			
Cascade PYP	Candidate School	◆	● ◻	Authorized World School ▲	
Peyton Forest PYP	Candidate School	◆	● ◻	Authorized World School ▲	
West Manor PYP	Candidate School	◆	● ◻	Authorized World School ▲	

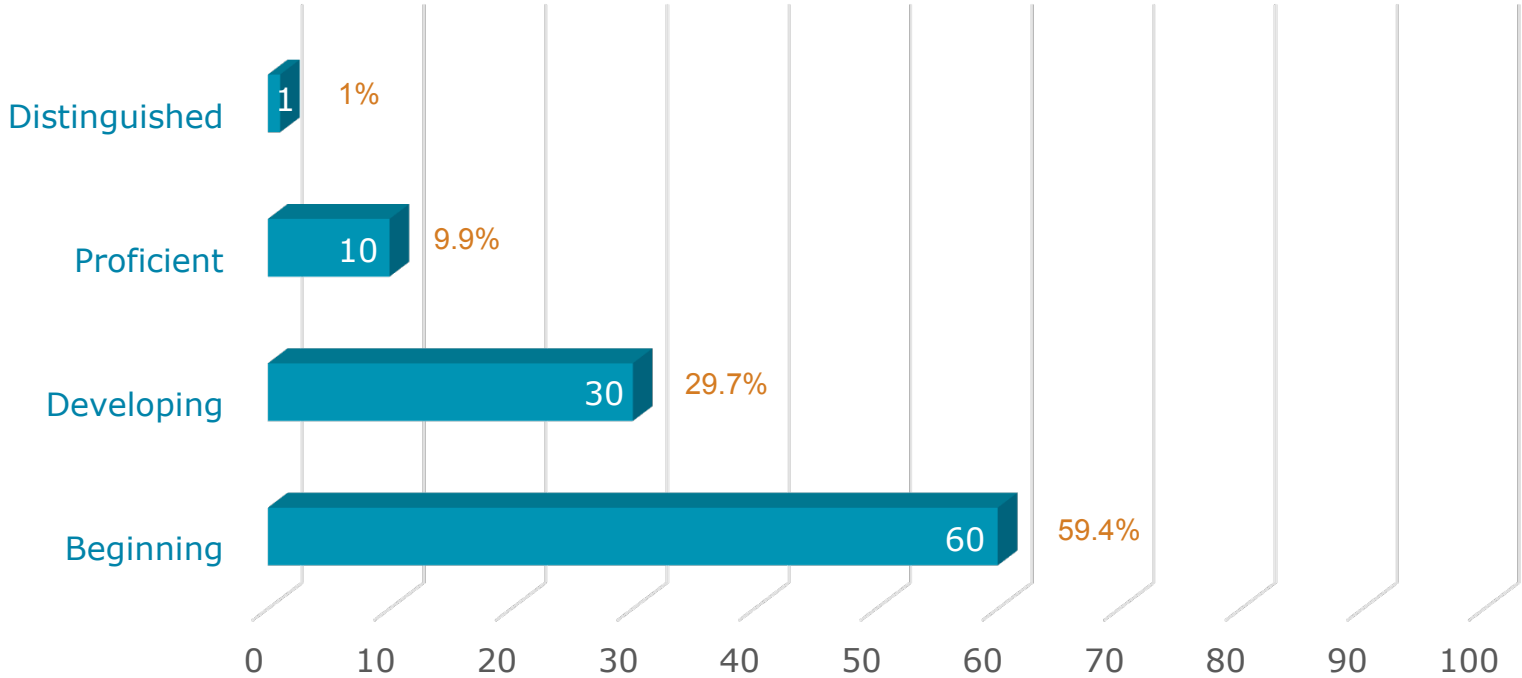
# Mays Cluster Performance – CCRPI\*

School	2014	2015	2016	Three- Year Average
West Manor	85.5	85.2	82.1	84.3
Beecher	63.3	82.2	61.8	69.1
Cascade	66.5	57.0	57.8	60.4
Miles	47.2	56.2	63.4	55.6
Peyton Forest	48.6	56.2	50.5	51.8
Young	53.7	55.9	50.2	53.3
Mays	54.7	67.4	62.1	61.4

Adamsville is not listed because the state does not provide CCRPI scores for primary schools. Primary schools do not take the Georgia Milestones Assessment.

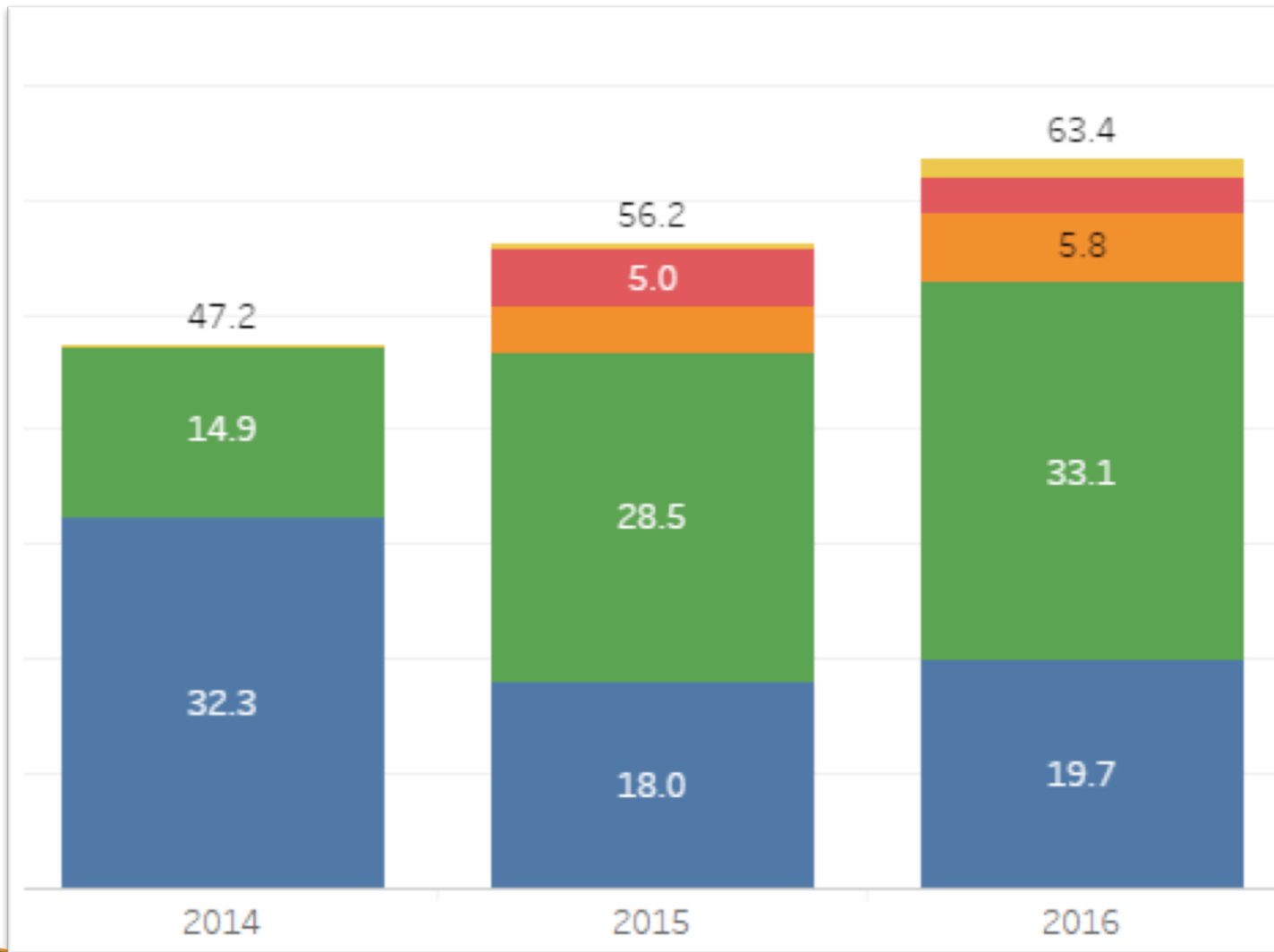
# Achievement Levels of Third Graders That Transitioned from Adamsville Primary to Miles Intermediate

Fall 2016 Star Reading



**Data shows that only 1 in 10 third graders read at proficient level**

# Miles Intermediate CCRPI



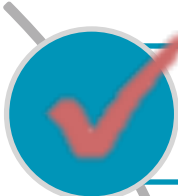




Data shows that performance levels have increased over the last three years.

- Exceeding the Bar
- ED/EL/SWD Perform...
- Achievement Gap
- Progress
- Achievement



# Progress is being made within Mays Cluster, providing reason for optimism

---

-  CCRPI Success in Elementary Schools with West Manor ES leading the way
-  Miles Intermediate Achieving Gains to Come Off State-Takeover List
-  Two Five-Star Schools for Climate Ratings in Beecher (98.3) and Cascade (97.4) and two Four-Star Schools in Miles (93.1) and Peyton Forest (92.3)
-  Extensive community engagement led to development of cluster plan and adoption of International Baccalaureate Signature Theme
-  Leadership Capacity Development with Rensselaerville Institute providing extensive principal turnaround coaching at Adamsville, Peyton Forest, Miles and Young

# Agenda

---

Welcome & Introductions

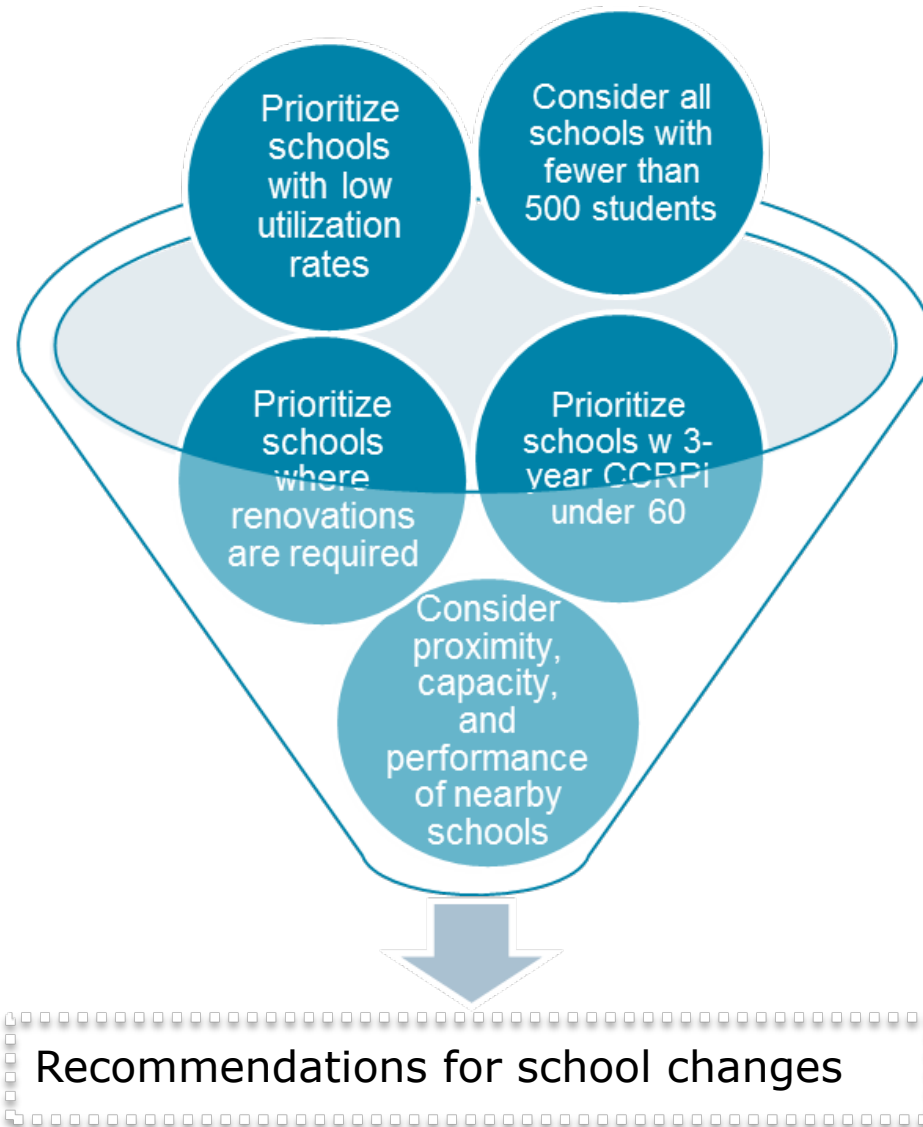
Purpose of Meeting

State of Cluster Summary

**Proposal for Operating Model Changes in Mays Cluster**

Q&A

# Criteria for Recommended Changes



# What changes are being proposed?

---

## Recommendation:

Close Adamsville Primary School; restructure Miles Intermediate as a PreK-5 school; redistrict some students to West Manor Elementary.

## Staff:

Consistent with past practices with merged schools, all staff from both Adamsville and Miles will be required to apply for a position at the newly created elementary school.

## Zoning:

As part of the proposed merger, students residing within the area east of I-285 would begin attending West Manor ES for 2017-2018. This area, encircled by Scott Street, includes Towne West Manor and London Town Houses.

# What is the rationale for the changes?

The primary and intermediate split between Adamsville and Miles creates a lack of coherence in academic planning and programming.

- Adamsville has lowest Climate Rating in entire district
- Opportunity to develop a K-5 school climate of excellence
- *Student* expectations, protocol, daily routines have to be reset in transition from 2<sup>nd</sup> to 3<sup>rd</sup> grade
- K-5 at one location will ease the transportation for families with more than one child
- Instructional planning is challenging when coordinating between two different staffs

All three schools – *Adamsville* (381), *Miles* (396) & *West Manor* (270) – are significantly under-enrolled. Both Miles and West Manor have sufficient capacity to accommodate students.

- West Manor is currently scheduled for \$10 million in SPLOST for renovations for July 2020 – July 2021.
- Adamsville campus would potentially be used as a swing space for West Manor during renovations.
- Further, community conversations need to continue about proper use of building based on community needs.

# Adamsville/Miles Enrollment Projections

School	Current Enrollment	Planning Capacity (@22 students/room)	Projected New 2017-18 Enrollment
Adamsville Primary	381	660	Merged
Miles Intermediate	396	770	702

Enrollment Projections for proposed merged school				
Grade	2017-18	2018-19	2019-20	2020-21
PK	44	44	44	44
K	119	114	122	111
1	103	118	113	121
2	87	102	117	112
3	95	89	104	119
4	123	98	92	108
5	131	124	99	93
<b>Total</b>	<b>702</b>	<b>689</b>	<b>691</b>	<b>708</b>

# West Manor Enrollment Projections

School	Current Enrollment	Planning Capacity (@22 students/room)	Projected New 2017-18 Enrollment
West Manor	270	352	311

Enrollment Projections for proposed merged school				
Grade	2017-18	2018-19	2019-20	2020-21
K	37	39	40	37
1	48	43	45	46
2	55	63	56	59
3	66	55	63	56
4	59	69	58	66
5	46	54	63	53
<b>Total</b>	<b>311</b>	<b>323</b>	<b>325</b>	<b>317</b>

# Staffing Allotments

---

## Miles Merged School

- + 12 Core Teachers
- + 1.6 Extended Core
- + 5 Paraprofessionals
- + .5 Counselors
- + \$5,000 Substitutes
- + \$28,500 Operating per pupil
- + \$22,500 Flex Funds

Gifted, EIP, ESOL, Special Ed, Nurse, Psychologist, and SSW may also increase, but we are awaiting exact allotments.

## West Manor

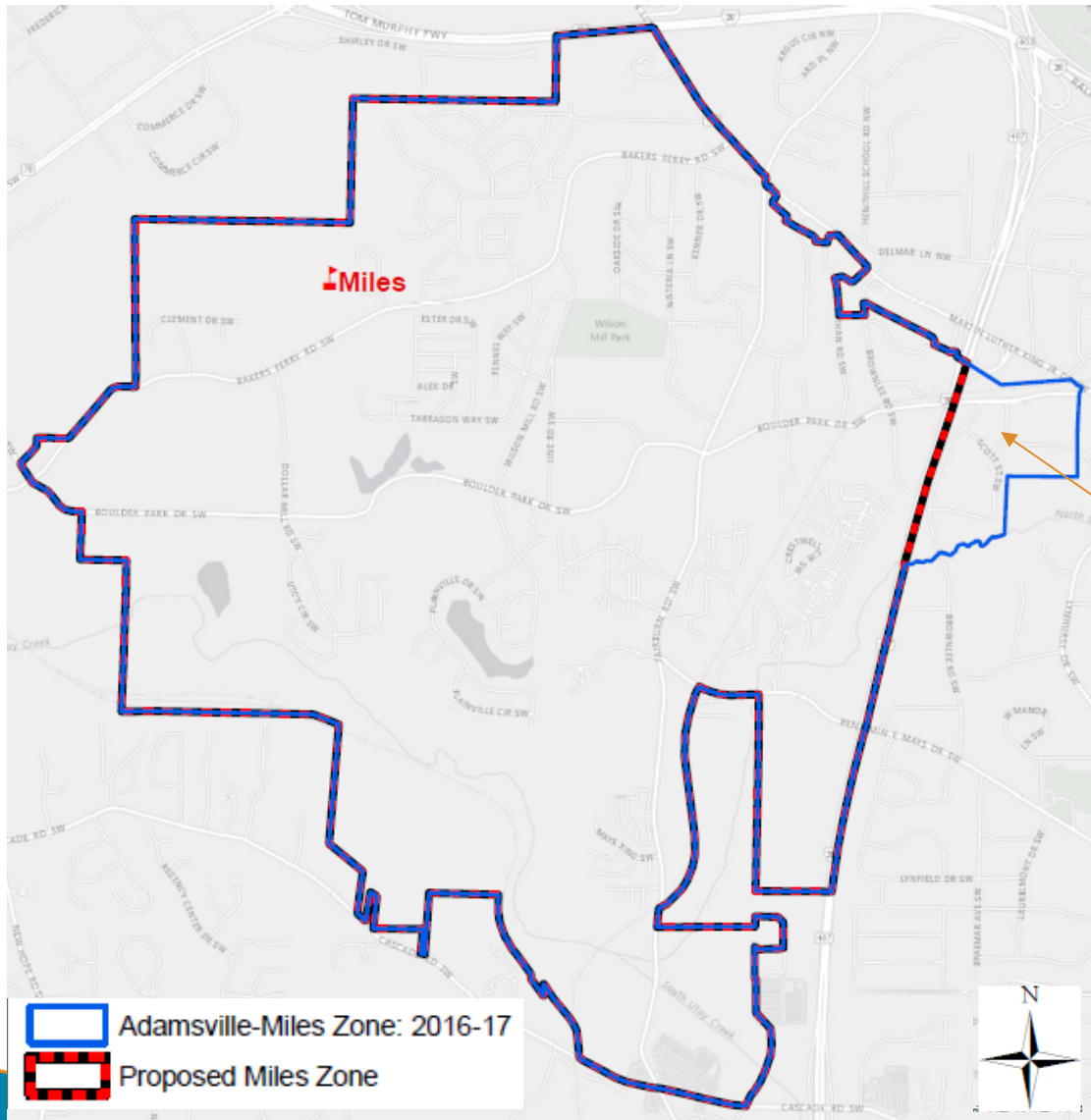
- + 1 Core Teachers
- + \$850 Substitutes
- + \$5,000 Operating per pupil
- + \$4,000 Flex Funds

Gifted, EIP, ESOL, Special Ed, Nurse, Psychologist, and SSW may also increase, but we are awaiting exact allotments.

Note: Class sizes are not expected to change with mergers



# Expected Boundary Changes with Merger



As part of the proposed merger, students residing within the area east of I-285 would begin attending West Manor ES for 2017-2018. This area, encircled by Scott Street, includes Towne West Manor and London Town Houses.

Proposed West Manor Attendance Zone

# Addressing Vacant Properties/Buildings

- ❖ The Board and Administration are committed to working with the community to identify appropriate use for vacant buildings
- ❖ Task Force named on January 9, 2017 at Board of Education Meeting to examine APS vacant buildings and parcels to support affordable housing.
  - Members:

**Bill Bolling**

Founder and former CEO, Atlanta Community Food Bank

**Catherine Buell**

CEO, Atlanta Housing Authority

**Andre Dickens**

Member, Atlanta City Council

**Hattie Dorsey**

Atlanta Neighborhood Development Partnership

**Jennifer Freeman**

Chair, Atlanta Planning Advisory Board

**Ryan Gravel**

Founder, Sixpitch

**Alan Lee**

AFSCME

**Keith Parker**

CEO and General Manager, MARTA

**Egbert Perry**

Integral Group Chairman and CEO

**Danny Shoy**

President of the East Lake Foundation

**Margaret Stagmeier**

Partner at Tristar Real Estate

**Nathaniel Smith**

Founder of Partnership for Southern Equity

- Charged with bringing recommendations to the Superintendent for consideration by June 2017
- ❖ Superintendent/Administration will continue to work on scenarios/options (including those unrelated to potential affordable housing efforts) for potential board action in fall 2017
- ❖ \$2-5 million in SPLOST is earmarked for management of vacant and dilapidated buildings
- ❖ Buildings often used for swing space, which will be needed for recently voter approved SPLOST implementation

# Mays Cluster Timeline

## Key Dates and Meetings

Jan. 12	Jan. 17	Jan. 26	Feb.1	Feb. 23	March 6	March 7-10	March 6-24	April 1
Senior Cabinet leaders meet with Mays Cluster staff about operating changes	Lunch with Mays Community Leaders	Mays Cluster Community Meeting @ 6 p.m. at Mays HS, 3450 Benjamin E. Mays Drive SW	Mays Cluster Public Hearing @ 6 p.m. at Adamsville Primary, 286 Wilson Mill Road	Mays Cluster Public Hearing @ 6 p.m. at Miles, 4215 Bakers Ferry Road	Atlanta Board of Education votes on proposal @6p.m. at CLL 130 Trinity Ave SW	HR Team meets with staff at impacted schools.	Principal conducts interviews and hiring process.	All staff members will be notified of their employment status.

# Q&A

---

**What questions or ideas do you have?**

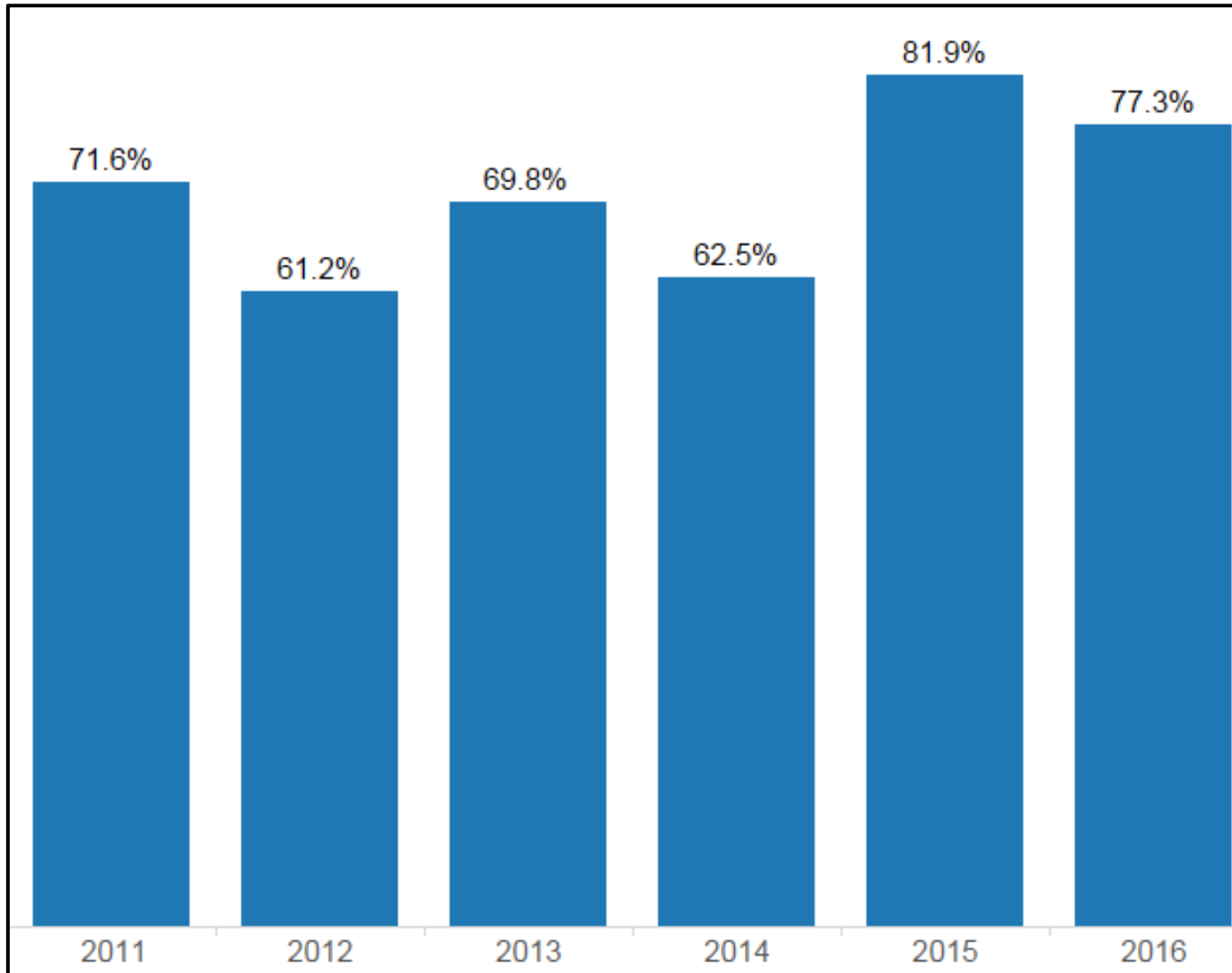
**What do you think the community needs?**



# APPENDIX

# Mays Cluster Graduation Rates

---



# Enrollment Projections Data Sources/Process:

---

- ✓ BASE: Current FTE-1 Enrollment
- ✓ Analyze Historic Trends by School and Grade
- ✓ Analyze U.S. Census data on different age groups
- ✓ Review New Residential & Non-Residential\* Permits issued by City; Estimate impact on schools
- ✓ Consider Approved Administrative Transfers
- ✓ Review Grandfathering Decisions due to rezoning
- ✓ Compare FTE-1 (October) and FTE-3 (March) to look for schools that gain or lose significant number of students during the school year.

*Non-Residential Permits can include new transportation locations, shopping centers, new locations that offer employment, etc.*

# Contact Information

---

- General Questions

Email: [externalaffairs@atlanta.k12.ga.us](mailto:externalaffairs@atlanta.k12.ga.us)

- District 5 Board Member Steven Lee

Email: [slee@atlanta.k12.ga.us](mailto:slee@atlanta.k12.ga.us)

- District 6 Board Member Eshé P. Collins

Email: [epcollins@atlanta.k12.ga.us](mailto:epcollins@atlanta.k12.ga.us)

- At-Large Seat 9 Board Member Jason F. Esteves

Email: [jesteves@atlanta.k12.ga.us](mailto:jesteves@atlanta.k12.ga.us)

- Superintendent Dr. Meria Carstarphen

Email: [suptoffice@atlanta.k12.ga.us](mailto:suptoffice@atlanta.k12.ga.us)

